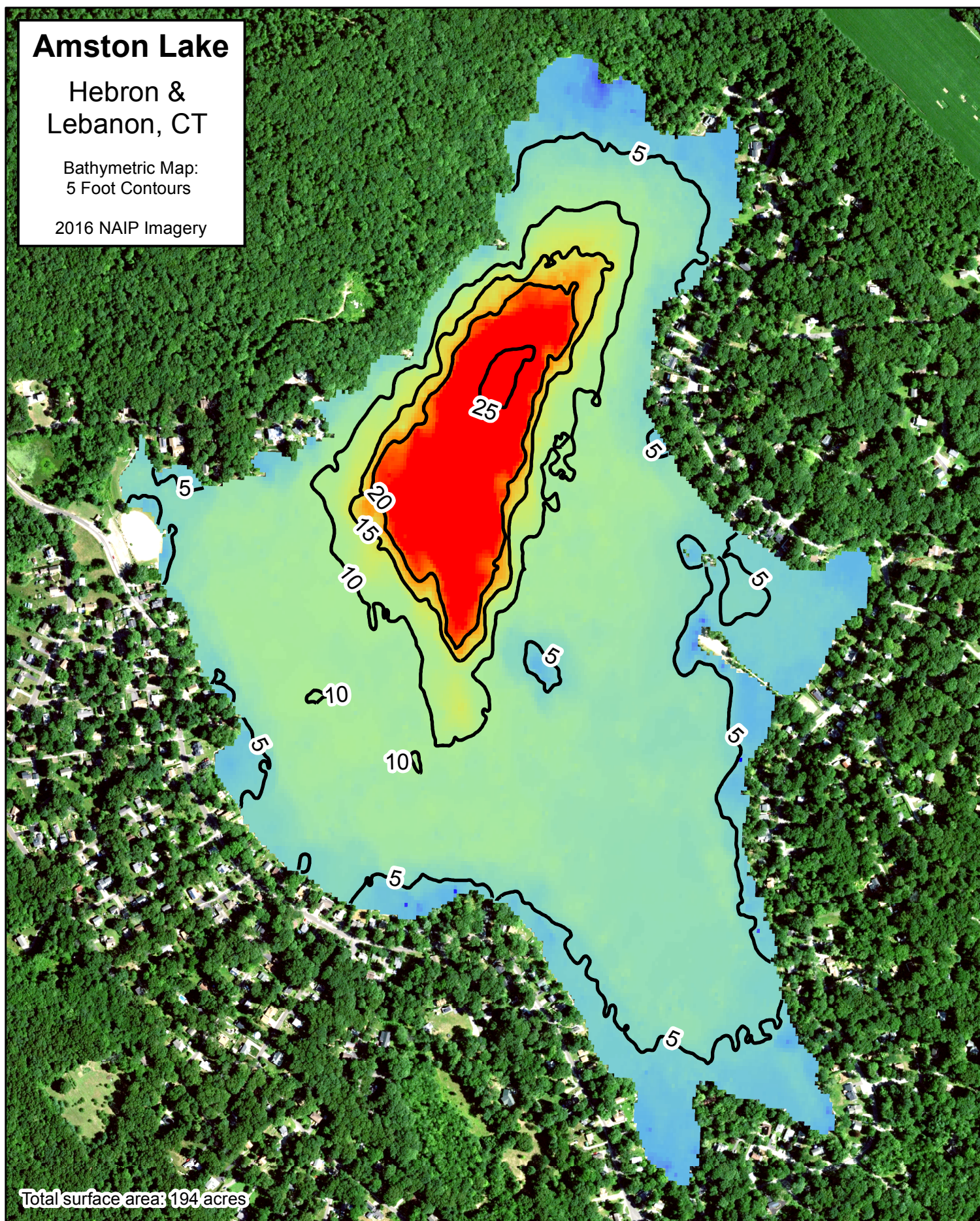


Amston Lake

Hebron &
Lebanon, CT

Bathymetric Map:
5 Foot Contours

2016 NAIP Imagery



This map utilizes NAIP Imagery (2016) as well as data collected by AER. This map is intended for general planning purposes only. It contains no authoritative data.

0 250 500 1,000 1,500 Feet



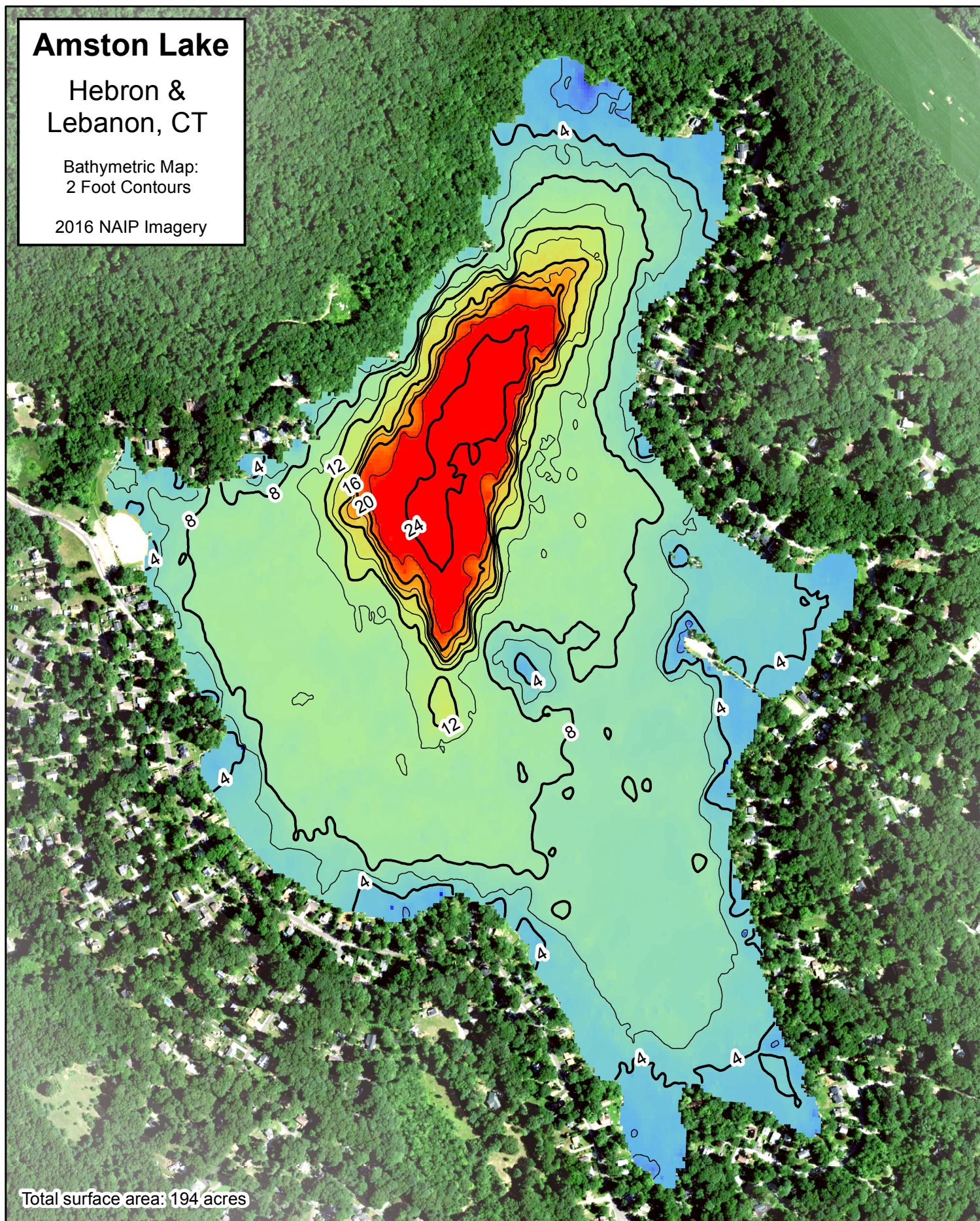
AER
AQUATIC ECOSYSTEM RESEARCH
A Freshwater Conservation Company

Amston Lake

Hebron &
Lebanon, CT

Bathymetric Map:
2 Foot Contours

2016 NAIP Imagery



Total surface area: 194 acres

This map utilizes NAIP Imagery (2016) as well as data collected by AER. This map is intended for general planning purposes only. It contains no authoritative data.

0 250 500 1,000 1,500 Feet



AER
AQUATIC ECOSYSTEM RESEARCH
A Freshwater Conservation Company

Amston Lake

Hebron &
Lebanon, CT

Bathymetric Map:
5 Foot Contours

2016 NAIP Imagery



Total surface area: 194 acres

*This map utilizes NAIP Imagery
(2016) as well as data collected by AER.
This map is intended for general
planning purposes only. It contains no
authoritative data.*

0 250 500 1,000 1,500 Feet



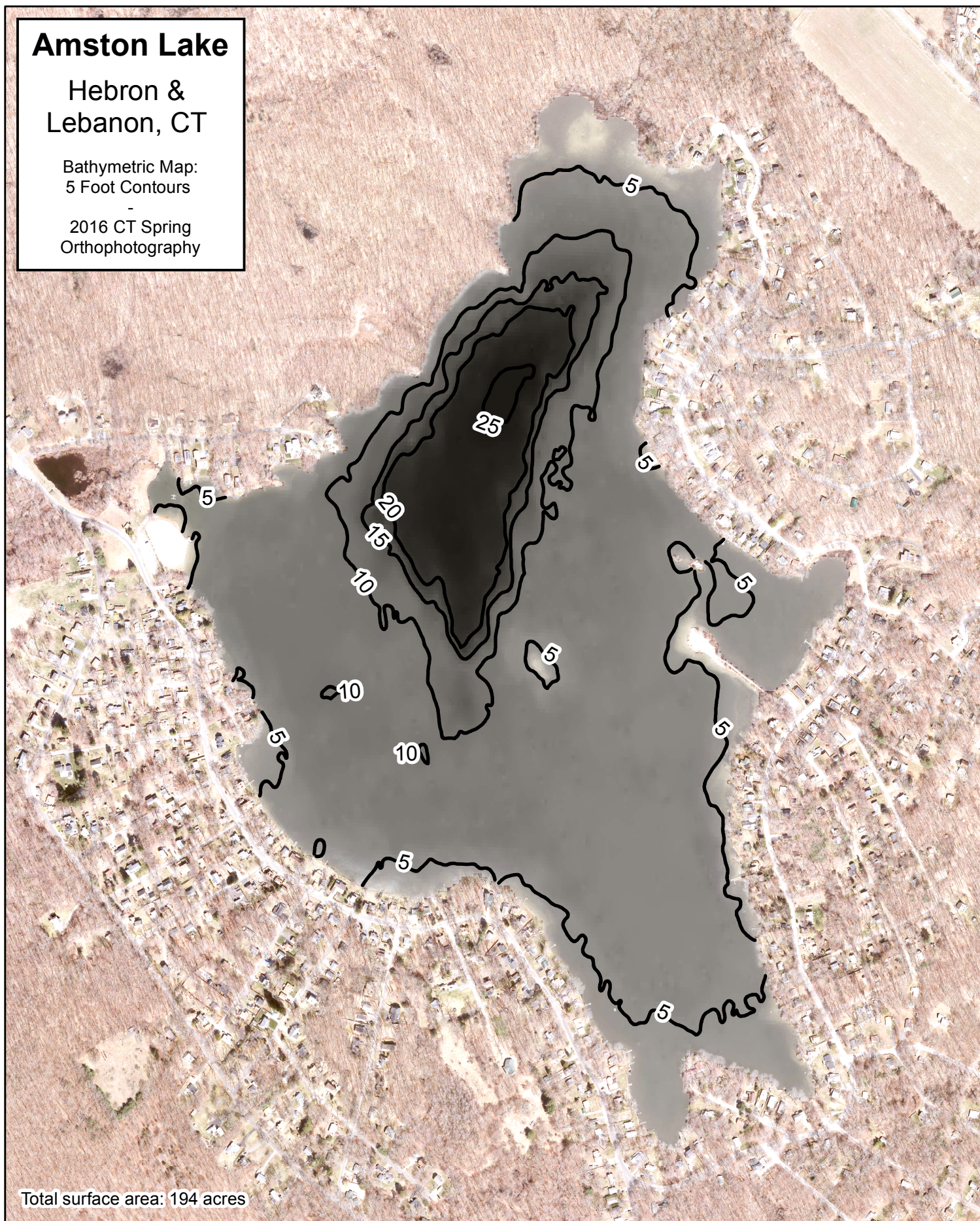
AER
AQUATIC ECOSYSTEM RESEARCH
A Freshwater Conservation Company

Amston Lake

Hebron &
Lebanon, CT

Bathymetric Map:
5 Foot Contours

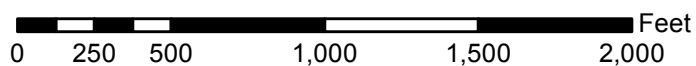
2016 CT Spring
Orthophotography



Total surface area: 194 acres

*This map utilizes CT Orthophotography
(2016) as well as data collected by AER.*

*This map is intended for general
planning purposes only. It contains no
authoritative data.*



Amston Lake

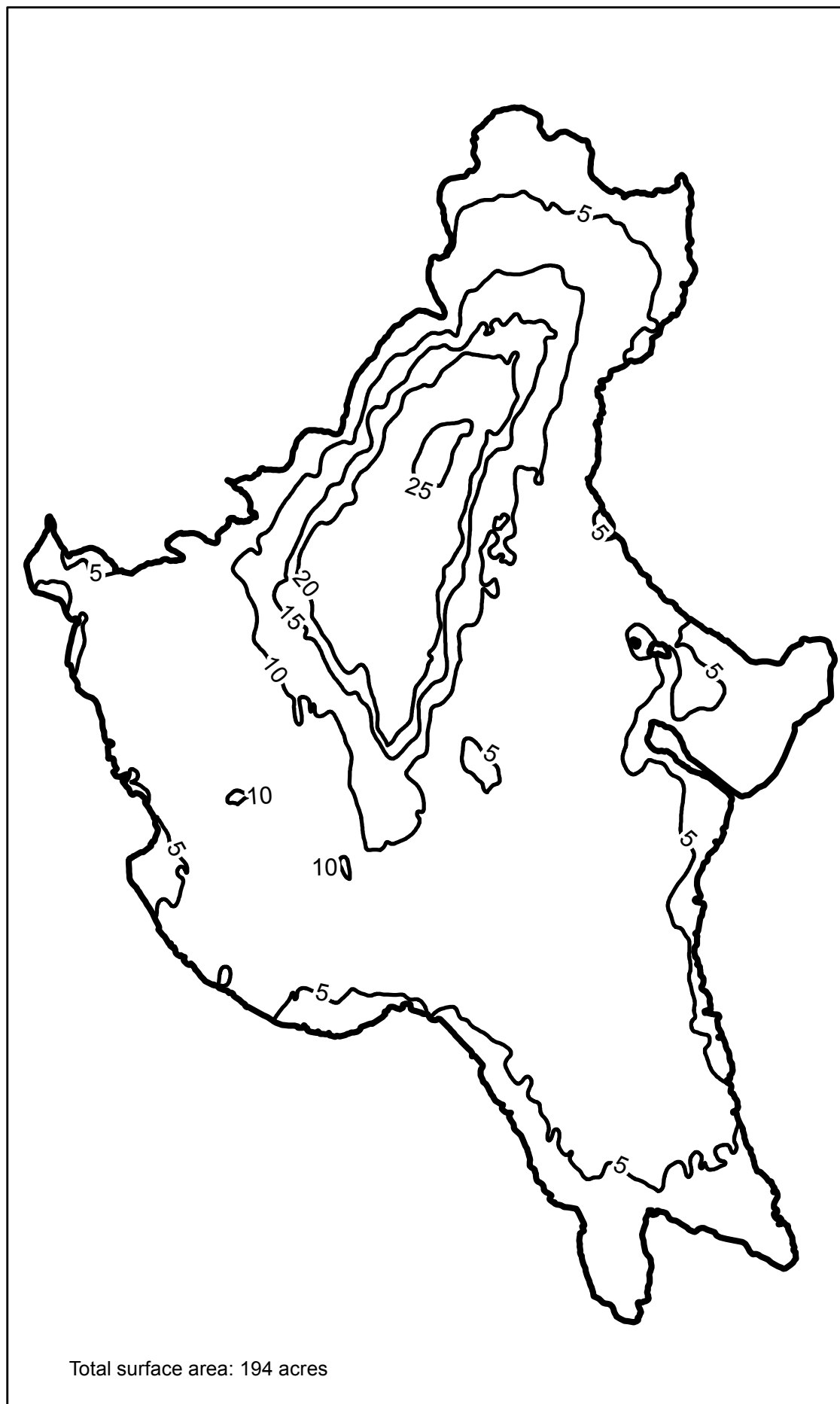
Hebron &
Lebanon, CT

Bathymetric Map:
5 Foot Contours

Bathymetric data collected
on 10/08/18
utilizing both sonar and
manual depth soundings.

Legend

— 5 Foot Contour



*This map utilizes data collected by AER.
This map is intended for general
planning purposes only. It contains no
authoritative data.*

0 250 500 1,000 1,500 2,000 Feet



Amston Lake

Hebron &
Lebanon, CT

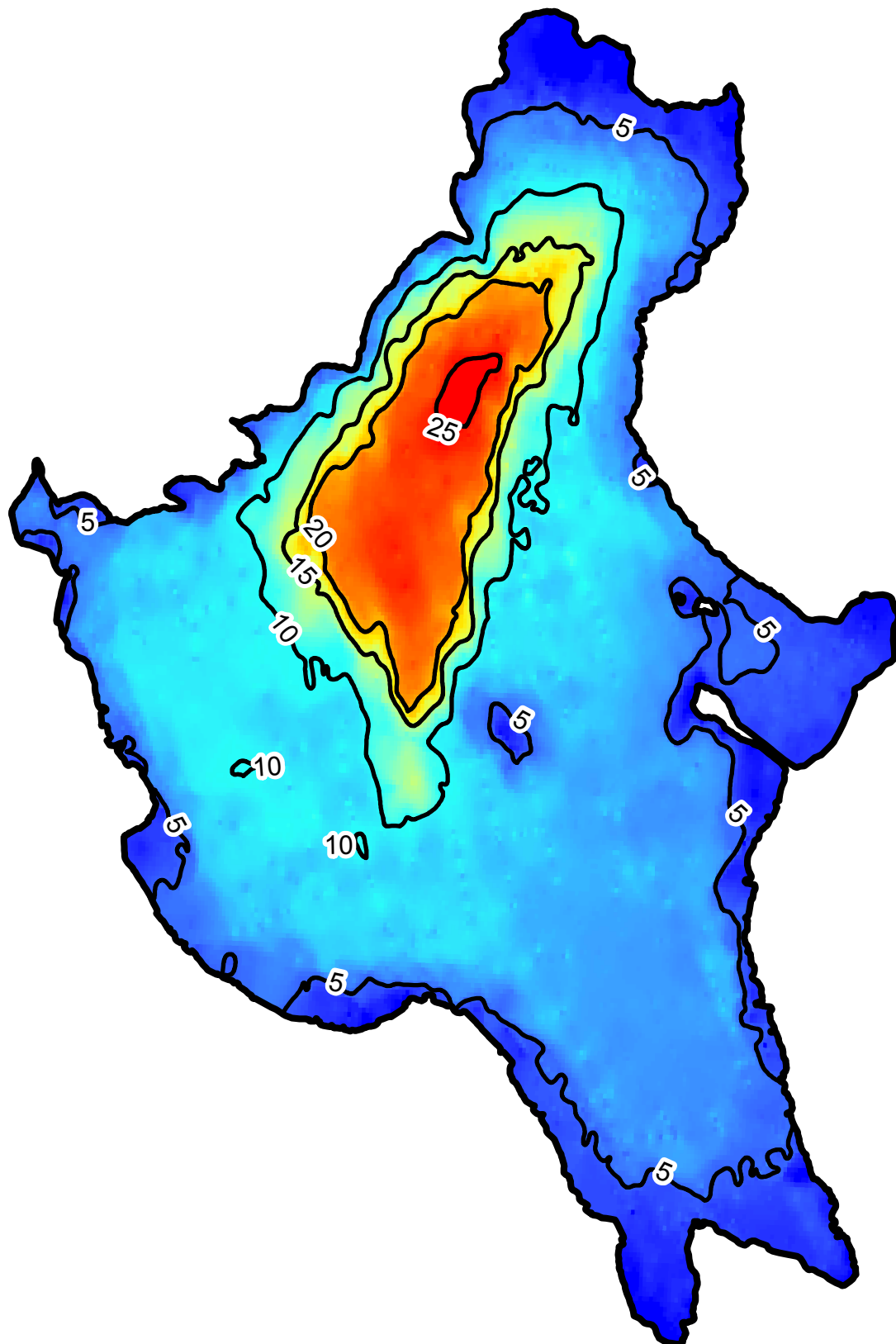
Bathymetric Map:
5 Foot Contours

Bathymetric data collected
on 10/08/18
utilizing both sonar and
manual depth soundings.

Legend

— 5 Foot Contour

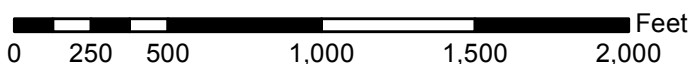
Depth (FT)



Total surface area: 194 acres



*This map utilizes data collected by AER.
This map is intended for general
planning purposes only. It contains no
authoritative data.*



Amston Lake

Hebron &
Lebanon, CT

Bathymetric Map:
1 Meter Contours

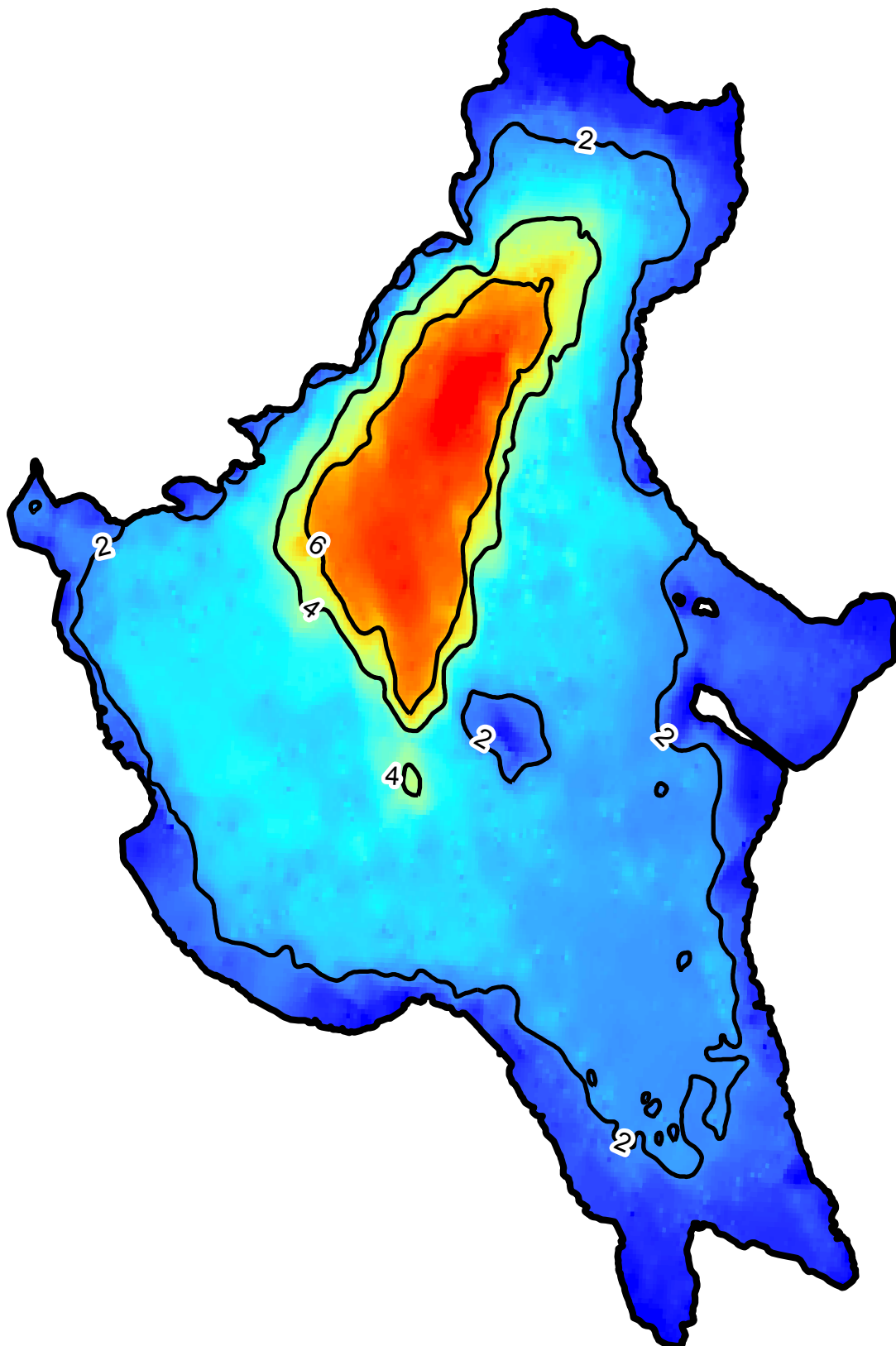
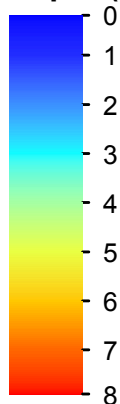
Bathymetric data collected
on 10/08/18
utilizing both sonar and
manual depth soundings.

Legend

— 2 Meter Contour

Meters

Depth (M)



Total surface area: 194 acres



*This map utilizes data collected by AER.
This map is intended for general
planning purposes only. It contains no
authoritative data.*

